



USER GUIDE

for component handling

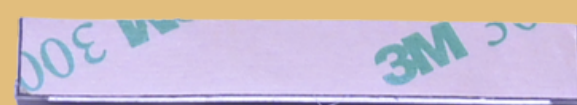
THE TYPES OF COMPONENTS WE PRODUCE

WE ARE DELIGHTED TO WELCOME YOU TO OUR REGO DESIGN USER GUIDE. REGO DESIGN WAS CREATED BY PEOPLE WHO LOVE LEGO. WE FOCUS ON THE RIGHT MEASUREMENT ALL THE TIME. WE ALSO PROVIDE THE BEST LIGHTING COMPONENTS IN ORDER TO BRING THE MOST SUITABLE AND PERFECT LIGHT AND LIFE TO LEGO!

THIS USER GUIDE IS DESIGNED TO HELP YOU CORRECTLY IDENTIFY AND HANDLE VARIOUS COMPONENTS - ENSURING A STRESS-LESS INSTALLATION

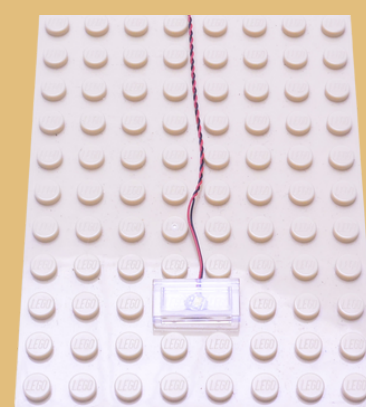
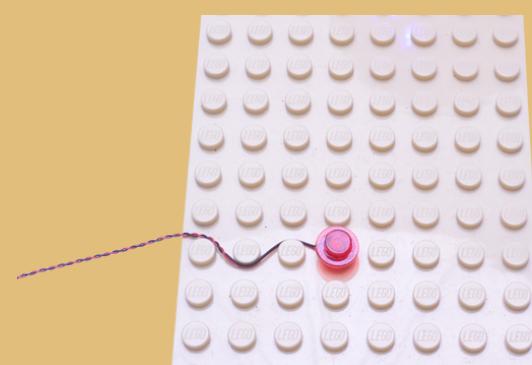
STRIP LIGHTS

STRIP LIGHTS INCLUDES TWO INDIVIDUAL LEDS AND HAVE AN ADHESIVE BACK WHICH CAN STICK SMOOTHLY TO LEGO® 1X6 PLATES. STRIP LIGHTS ARE AVAILABLE IN DIFFERENT OF COLORS



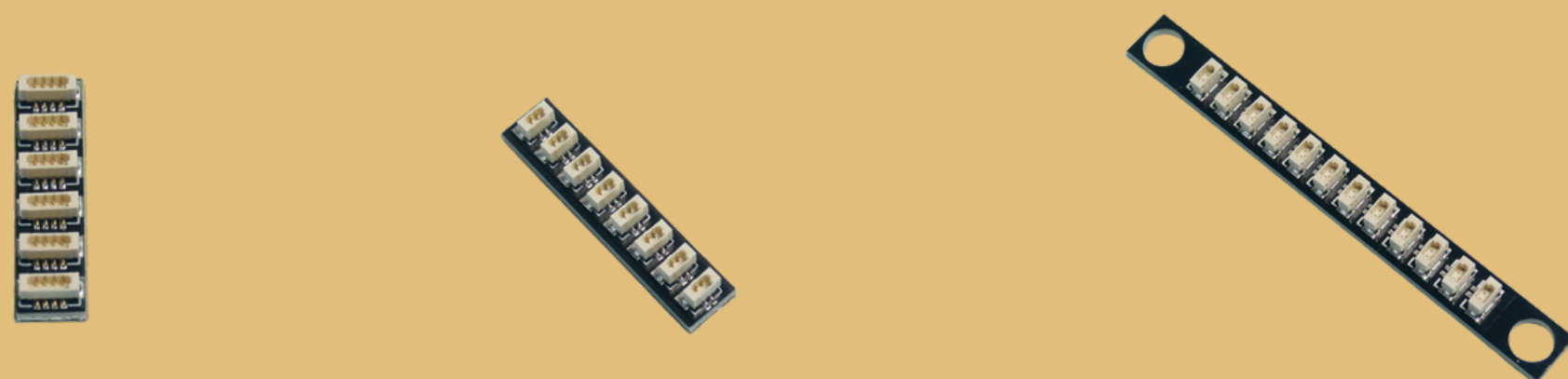
BIT LIGHTS

BIT LIGHTS ARE TINY LEDS THAT FIT IN BETWEEN AND UNDERNEATH LEGO® PIECES. BIT LIGHT ARE OBTAINABLE IN SEVERAL COLORS AND EFFECTS



EXPANSION BOARDS

EXPANSION BOARDS ALLOW CONNECTIONS OF MULTIPLE COMPONENTS. SIMPLY CONNECT YOUR LIGHTS, CONNECTING CABLES AND POWER OPTIONS TO AN AVAILABLE ON AN EXPANSION BOARD TO CREATE A CIRCUIT.



CONNECTING CABLES

CONNECTING CABLES ARE USED TO LINKS STRIP LIGHTS AND EXPANPANSION BOARDS TOGETHER



POWER OPTIONS

REGO DESIGNS BLOCK HAVE A WIDE VARIETY OF POWERING OPTIONS, INCLUDING POWER SOURCED FROM BATTERIES, USB OR LEGO POWER FUNCTIONS.

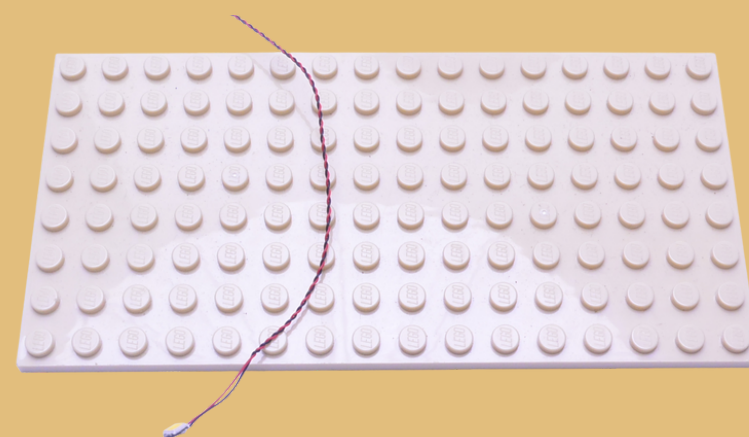
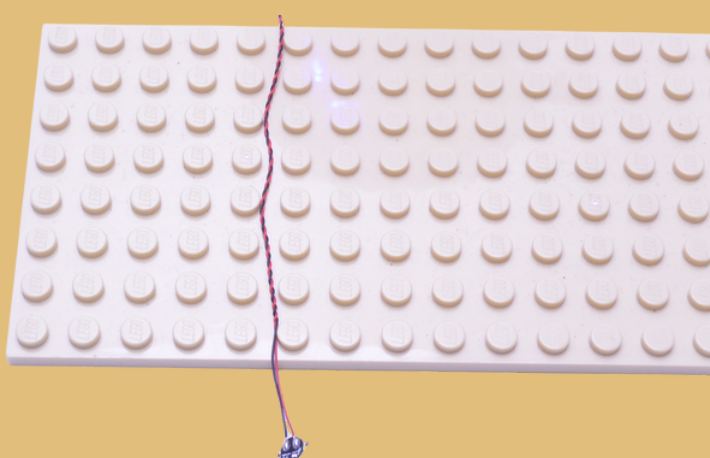


IMPORTANT THINGS TO NOTE

REGO DESIGN COMPONENTS ARE BEING MEASURES TO BE SMALL ENOUGH TO FIT IN BETWEEN AND UNDERNEATH LEGO® BRICKS. THIS ALSO MEANS THE COMPONENTS ARE DELICATE AND SHOULD ALWAYS BE HANDLED WITH CARE

LAYING CABLES IN BETWEEN LEGO

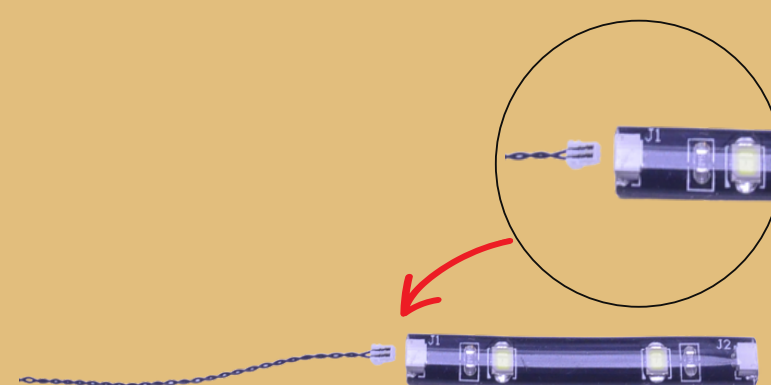
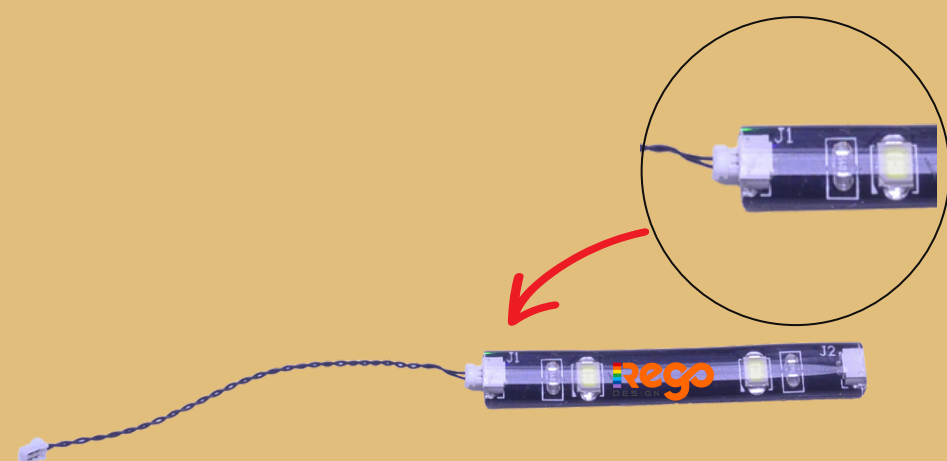
CABLES CAN FIT UNDERNEATH AND IN BETWEEN LEGO® PLATES, PIEVE, AND TILES PROVIDING THEY ARE LAID CORRECTLY BETWEEN THE LEGO® STUDS. DO NOT FORCEFULLY CONNECT LEGO® TOGETHER AROUND CABLES; ALTERNATELY, ENSURE THEY ARE LYING COMFORTABLY IN BETWEEN EACH STUD.



CAUTION: FORCING LEGO® TO CONNECT OVER A CABLE CAN REAL DAMAGING THE CABLE AND LIGHT.

CONNECTING CABLES TO STRIP LIGHTS

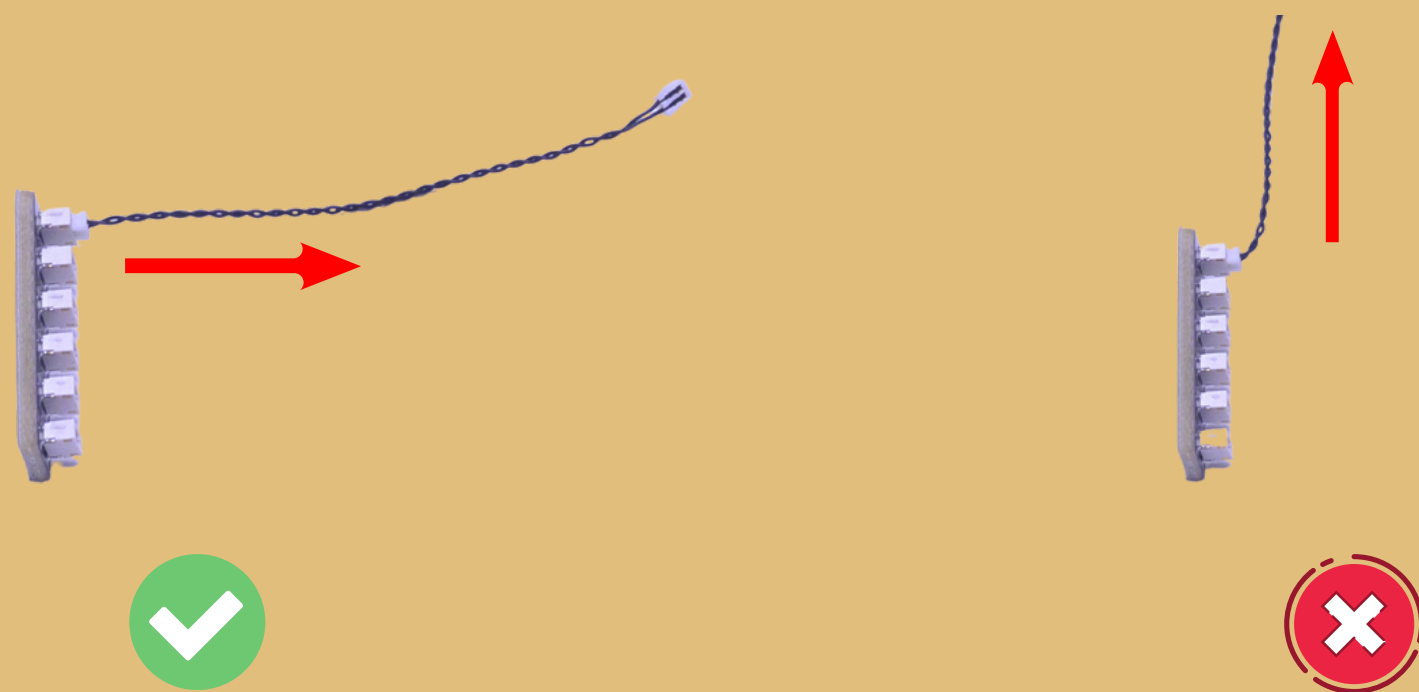
PLEASE PAY EXTRA CARE WHEN PLUG IN CONNECTORS TO STRIP LIGHTS. CONNECTORS CAN BE PLUGGED ONLY ONE WAY. WITH THE STRIP LIGHT FACING UP, MAKING SURE THE SIDE OF THE CABLE CONNECTOR WITH THE WIRES IS DISCLOSED FACING DOWN



CAUTION: IF PLUG WON'T FIT EASILY INTO A PORT, DON'T FORCE IT. DOING SO WILL DAMAGE THE PLUG AND THE PORT.

CONNECTING CABLES TO EXPANSION BOARDS

PLEASE TAKE EXTRA CARE WHEN INSERTING CONNECTORS TO PORTS OF EXPANSION BOARDS. CONNECTORS CAN BE INSERTED ONLY ONE WAY. WITH THE EXPANSION BOARD FACING UP, LOOK FOR THE SOLDERED “=” SYMBOL ON THE LEFT SIDE OF THE PORT. THE CONNECTOR SIDE WITH THE WIRES EXPOSED SHOULD BE FACING TOWARD THE SOLDERED “=” SYMBOL AS YOU INSERT INTO THE PORT. IF A PLUG DOESN'T FIT EASILY INTO A PORT CONNECTOR, DON'T FORCE IT. CHECK THAT THE PLUG IS FACING THE RIGHT WAY BEFORE TRYING TO CONNECT AGAIN



TROUBLESHOOTING

DUE TO THEIR SIZE, INDIVIDUAL COMPONENTS USED IN REGO DESIGN LIGHT KITS CAN BE EASILY DAMAGED IF MISHANDLED. IT IS ESSENTIAL THAT THE USER GUIDE SECTION, "IMPORTANT THINGS TO NOT", IS CAREFULLY READ AND FOLLOWED. DOING SO WILL PREVENT FAULTS AND DAMAGES TO YOUR REGO DESIGN COMPONENTS. FIRST, LET'S TAKE YOU THROUGH SOME OF THE MOST COMMON CAUSES:

CHECK EXPANSION BOARDS, FX BOARDS AND STRIP LIGHTS

ONE OF THE MOST COMMON PROBLEMS CUSTOMERS FACE WHEN INSTALLING REGO DESIGN LIGHTING KITS IS A 'SUSPECTED' FAULTY EXPANSION BOARD.

CONNECTORS CAN ONLY BE INSERTED IN THE COMPONENT'S PORTS ONE WAY, WITH THE EXPOSED WIRES FACING THE '=' SYMBOL.

FORCEFULLY INSERTING CONNECTORS THE INCORRECT WAY WILL DAMAGE PINS INSIDE THE PORTS OF THE COMPONENTS.

NOT ONLY WILL A LIGHT CONNECTED TO THE DAMAGED PORT NOT WORK, BUT IF THE PINS INSIDE THE PORT ARE BENT TO A POINT THEY ARE TOUCHING EACH OTHER, IT CAN RESULT IN OVERHEATING OF THE WIRES CONNECTED. THIS IS CALLED A SHORT CIRCUIT.

A SHORT CIRCUIT CAN RESULT IN OVERHEATING OF THE BOARD, CABLE OR BATTERIES. IF YOU SUSPECT A SHORT CIRCUIT **DISCONNECT POWER IMMEDIATELY**. BATTERIES CAN FAIL, CATCH FIRE, OR EVEN EXPLODE IF LEFT CONNECTED TO A SHORT CIRCUIT FOR TOO LONG.

IF YOU SUSPECT YOU HAVE A FAULTY EXPANSION BOARD, STRIP LIGHT, OR FX BOARD, CHECK TO SEE IF THE PINS ARE BENT. IF YOU LOOK CAREFULLY INSIDE EACH OF THE PORTS, THEY EACH CONTAIN TWO SMALL PINS WHICH SHOULD BE STRAIGHT. YOU WILL BE ABLE TO IDENTIFY THE FAULTY PORT AS THE PORT WITH A BENT PIN(S).

TROUBLESHOOTING

CHECK EXPANSION BOARDS, FX BOARDS AND STRIP LIGHTS (CONT.)

TO FIX THE FAULTY PORT, YOU WILL NEED A SHARP UTENSIL SUCH AS A PIN, NEEDLE OR A PAIR OF TWEEZERS WHICH CAN BE USED TO STRAIGHTEN THE BENT PIN INSIDE THE FAULTY PORT.

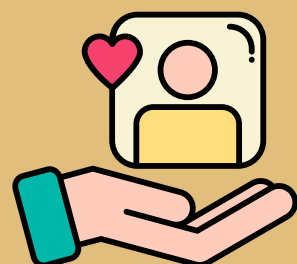
SIMPLY USE THE UTENSIL TO BEND THE PIN BACK IN LINE. ONCE THE PIN IS STRAIGHT, YOUR EXPANSION BOARD SHOULD FUNCTION CORRECTLY.

CHECK BATTERIES

ENSURE THAT YOU'RE USING NEW BATTERIES AND THAT THEY ARE INSERTED THE CORRECT WAY INTO THE BATTERY PACK. CHECK THAT THE '+' SIDE OF THE BATTERY IS FACING THE '+' SIDE OF THE BATTERY PACK, THE '-' SIDE OF THE BATTERY IS FACING THE '-' SIDE OF THE BATTERY PACK.

CHECK WIRING

REGO DESIGN COMPONENTS ARE VERY SMALL, AND CAN THEREFORE BE EASILY DAMAGED WHEN NOT HANDLED APPROPRIATELY. BE CAREFUL WHEN YOU REMOVE AND UNPACK COMPONENTS OUT OF THE PACKAGING TO ENSURE YOU DO NOT FORCEFULLY PULL THE WIRES AS THIS CAN DAMAGE THE TINY WIRES SOLDERED ONTO THE LED. IF THE WIRES BECOME SEPARATED FROM THE LED, IT WILL NOT WORK.



CONTACT US

If you have an enquiry regarding the online shop, our products or a general enquiry or other simple question, please refer to our Frequently Asked Questions webpage here at www.regodesign.net. Alternatively, you can contact our Customer Services team by email a mail here at:

support.regodesign.us

We thank you for purchasing this product and hope you enjoy!



www.regodesign.us